

## Investment Policy

EC SICAV - EVER CAPITAL INVESTMENTS ACHILLES UCITS is a Luxembourg fund whose target is to increase capital, taking advantage of opportunities in financial markets. It is a diversified fund with 5/10/40 investment structure.

The fund has the flexibility to invest in different assets, equities, fixed income, commodities, currencies and “special situations” understood as unique opportunities depending on the circumstances of the asset, including its price. Management is dynamic being the key of success: PRICE, FLEXIBILITY when choosing where to invest, OPTIMIZATION risk / profitability binomial and low CORRELATION. The annual profitability target is 10%.

## Monthly Historical Return

	Jan	Feb	Mar	Apr	May	Jun	Jul	Aug	Sep	Oct	Nov	Dec	Total
2019										-0.05%	1.67%	6.78%	8.57%
2020	0.07%	-10.14%	-37.84%	26.74%	2.29%	5.64%	-3.89%	3.81%	-3.58%	2.07%	23.1%	3.69%	-4.16%
2021	6.88%	8.43%	4.03%	1.66%	1.75%	-1.52%	-1.70%	0.84%	1.76%	0.66%	-2.83%	-1.56%	23.07%
2022	-0.12%	3.17%	3.74%	-0.18%	1.76%	-7.18%	0.15%	0.29%	-5.23%	4.99%	4.16%	-4.88%	-0.20%
2023	10.50%	-1.64%	0.01%	-0.34%	0.09%	4.43%	1.26%	0.08%	-2.09%	-3.81%	5.33%	3,90%	18,25%
2024	-2.35%	-1.40%	4.94%	-4.55%	3.02%	-1.74%	2.11%	0.69%					0.37%

## Share Class

Share Class	Subscription fee	Redemption Fee	Minimal Initial Subscription	Management Fee	Success Fee	ISIN
Retail	-	-	1,000 EUR	1.60%	15%	LU1953238794
Institucional I	-	to 0.2%	100,000 EUR	1.50%	15%	LU1953238877
Institucional II	-	to 0.2%	500,000 EUR	1.30%	15%	LU1953238950

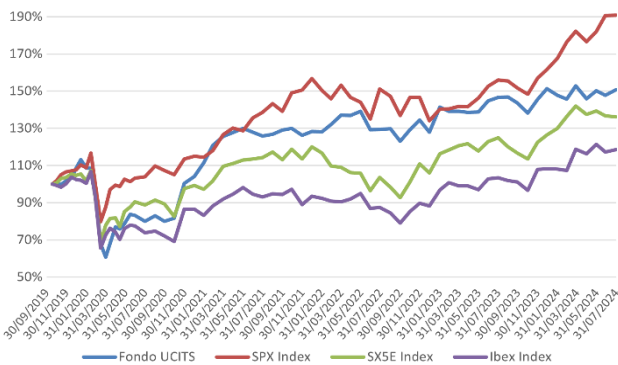
## Risk Data

Annual Volatility	10.08%
Sharpe Ratio	0.04
Beta IBEX	0.62
Beta S&P500	0.62

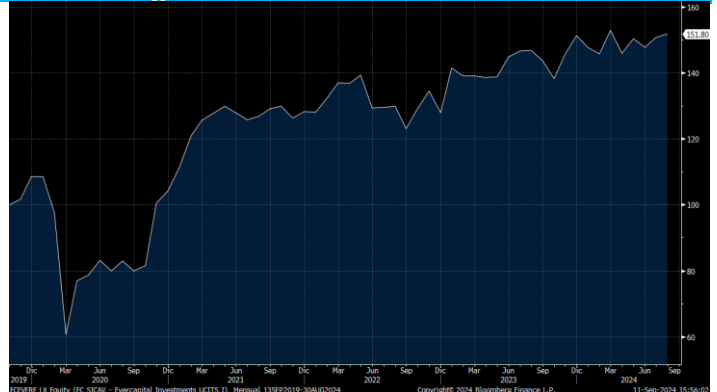
## Return Data

NAV Aug 2024	151.80
Return Since Inception	51.80
Return 2024	0.37%
IBEX YTD	12.84%
S&P 500 YTD	18.42%

## Historical Comparative



## Bloomberg



## Data

Fund Size	Eur < 20 mill.	Portfolio Manager	Ever Capital Investments SV
Subscription/Redemption	Daily	Website	<a href="http://www.evercapitalsv.com">www.evercapitalsv.com</a>
Currency	EUR	Paying Agent	Quintet Luxembourg
Inception Date	01/11/2019	Depository	Quintet Luxembourg
License Number	8142	Management Agent	EC SICAV
Auditor	Deloitte Audit, SARL	Residence	Luxembourg
High Watermark	Yes	Platforms	Allfunds Bank International
Administrator	European Fund Administration		Inversis
			MyInvestor
Investment Manager	Andbank Asset Management Lux.	Contact	<a href="mailto:info@evercapitalsv.com">info@evercapitalsv.com</a>

**DIRECTORY**

**Registered Office**

4 rue Jean Monnet, L-2180 Luxembourg

**Board**

Cayetano Ramos

*Executive President*

*Ever Capital Investments, S.V.*

*Director*

Philippe Esser

*Head of Institutional Sales*

Andbank Asset Management Luxembourg

*Director*

Joaquin Canadell

Chief Financial Officer

*Ever Capital Investments, S.V.*

*Director*

**Domiciliary and Corporate Agent**

ANDBANK ASSET MANAGEMENT LUXEMBOURG

4, rue Jean Monnet

L-2180 Luxembourg

**Global Distributor and Management Company**

ANDBANK ASSET MANAGEMENT LUXEMBOURG

4, rue Jean Monnet

L-2180 Luxembourg, R.C.S. B147174

**Register and Transfer Agent and**

**Administrative Agent**

European Fund Administration S.A.

2, rue d'Alsace, B.P. 1725

L-1017 Luxembourg

**Depositary and Paying Agent**

Quintet Luxembourg

43, boulevard Royal

L-2955 Luxembourg

**Auditor**

Deloitte Audit, SARL

20 Boulevard de Kockelscheuer

L-1821 Luxembourg

The depositary of the sub-fund is Quintet Luxembourg.

Specific information: The sub-fund EC SICAV - EverCapital Investments ACHILLES UCITS may also issue other classes of shares. The Company's management may inform you of other classes of shares that may be offered in your country. This key investor information document provides information on a sub-fund of EC SICAV, which may consist of several sub-funds. The prospectus and the annual and semiannual reports are prepared for the entire fund. The assets and liabilities of the sub-fund are divided by legal imperative so that the commitments and responsibilities of one sub-fund do not affect the other sub-funds. The investor has the right to convert her investment from shares of one sub-fund to shares of the same or another sub-fund. The investor can find out in the fund's prospectus on how to subscribe, redeem and convert shares.

Prospectus and the latest annual and semi-annual reports for the entire fund, as well as other information, such as the most recent NAV, are available on request and free of charge in English at the registered office of the fund, located at 4, rue Jean Monnet L-2180 Luxembourg, Grand Duchy of Luxembourg, and on the following website: <https://www.andbank.com/luxembourg/>.

Luxembourg tax law may affect your personal tax situation.

Andbank Asset Management Luxembourg will only incur liability for the statements contained in this document that are misleading, inaccurate or inconsistent with the corresponding parts of the Fund Prospectus.

Information on Andbank Asset Management Luxembourg's remuneration policy can be found both in the prospectus and on the website <https://www.andbank.com/luxembourg/>. A paper copy can be requested at the fund's registered office.

---

EC SICAV - EverCapital Investments ACHILLES UCITS, is registered in Luxembourg and authorized and regulated by the CSSF as an Investment Fund. The registered office of the company is: 4 rue Jean Monnet, L-2180 Luxembourg. Investors are encouraged to read and understand the latest version of the relevant fund's Prospectus or Offering Memorandum, available at the registered office, prior to subscription of the shares and to understand the risks inherent in this type of investment.

This document is not intended to constitute legal, tax or financial advice, and potential investors should consult with their own advisers independently to determine the implications of their investment and seek advice in connection with it.